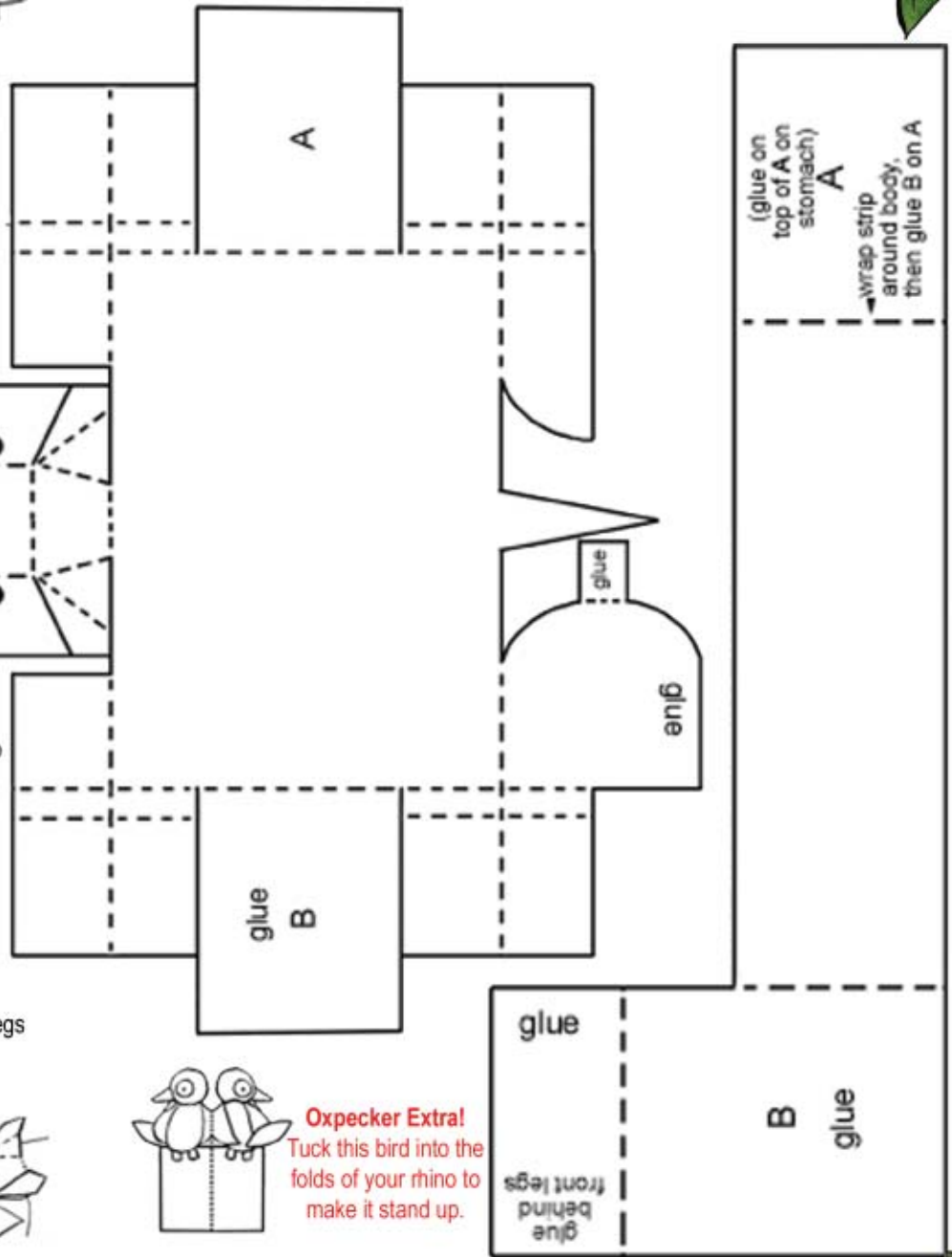
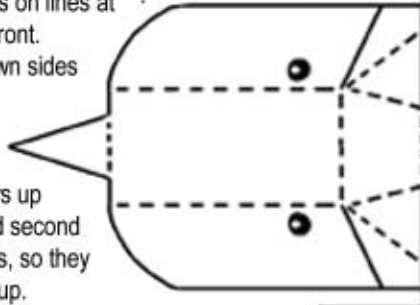
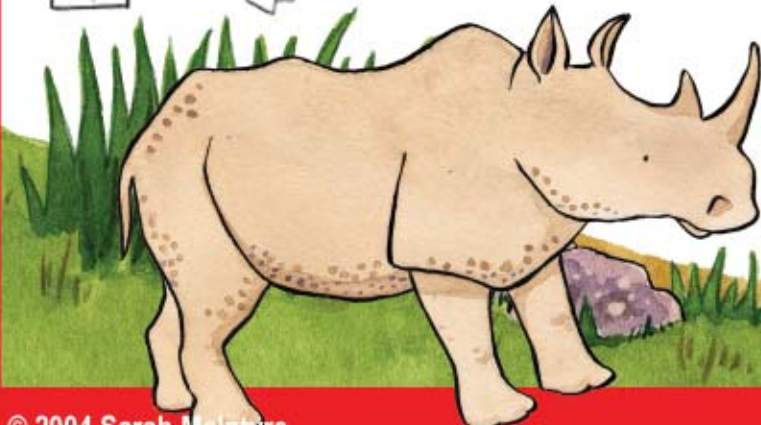
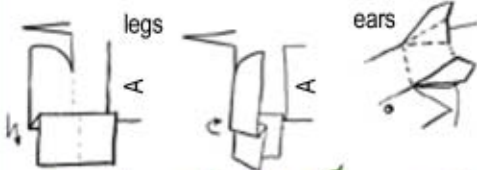


# RHINO CUTOUT

1. Cut around the two pieces.
2. Cut in solid lines, by the ears and stomach flaps.
3. Fold sides down (stomach flaps and legs), fold legs back again on second dotted line nearer the edge.
4. Fold legs on lines at back and front.
5. Fold down sides of face.
6. Fold ears up on first and second dotted lines, so they can stand up.
7. Glue flap B under flap A to make the rhino's stomach.
8. Fold down the small flap in back, glue to top of back arch. Glue other leg on top of back panel.
9. On the second L-shaped piece, fold down on the dotted lines.
10. Glue A to the A on the stomach, with the A's facing the same direction.
11. Wrap strip around body.
12. Glue B on top of A.
13. Fold up smaller tab, glue behind front legs to create a chest.
14. Fold up the horn and run for cover!



**Oxpecker Extra!**  
Tuck this bird into the folds of your rhino to make it stand up.



## RILEY'S WORLD